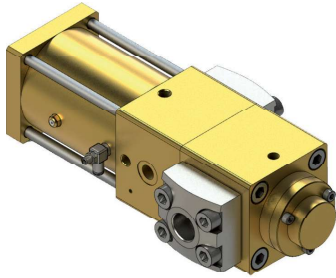


MPG 12 NC / NO

2/2 way valve (pneumatically operated)



- ♦ Medium : inert gases / rare gases / O₂ / CO₂ / air, other media on request
- ♦ Function NC (normally closed) or NO (normally open)
- ♦ This valve is pressure-balanced and suitable for high-pressure oxygen service
- ♦ Approval : BAM / CTE
- ♦ Connections for pressure indicator available on request
- ♦ Conformity : ATEX

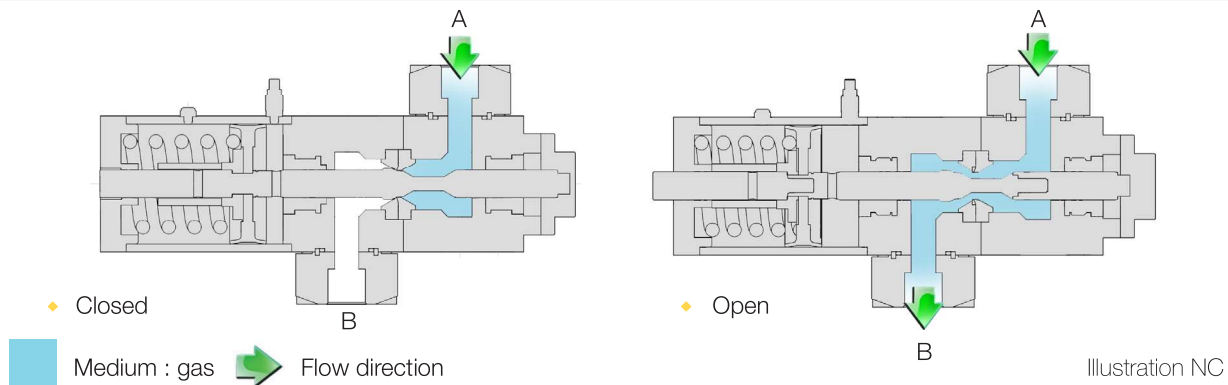
The valves type MPG 12 NC (normally closed) and MPG 12 NO (normally open) are 2/2 way valves, which are pneumatically operated. By the use of pilot media, the valves open and close against the spring load (depending on the type of valve).

Technical data

Version February 2016

♦ Pressure range	PN 420
♦ Standard connections	SW 1/2", BW 1/2", BW 3/4"
♦ Nominal diameter	DN 12
♦ Actuation	3/2 way pilot valve
♦ Pilot pressure	7 bar
♦ Pilot connections	4 mm
♦ Media temperature	from -40 °C to +80 °C
♦ Ambient temperature	from -40 °C to +60 °C
♦ Leak rate	10 ⁻⁶ mbar l/s
♦ Actuation time / opening	Type NC 620 - 24000 ms (adjustable with nozzle) / type NO 550 ms
♦ Actuation time / closing	Type NC 550 ms / type NO 620 - 24000 ms (adjustable with nozzle)
♦ Flow direction	A → B B → A
♦ Kv-value	5,0 m ³ /h 4,8 m ³ /h
♦ Weight	11 kg (including connection adapter)

Function

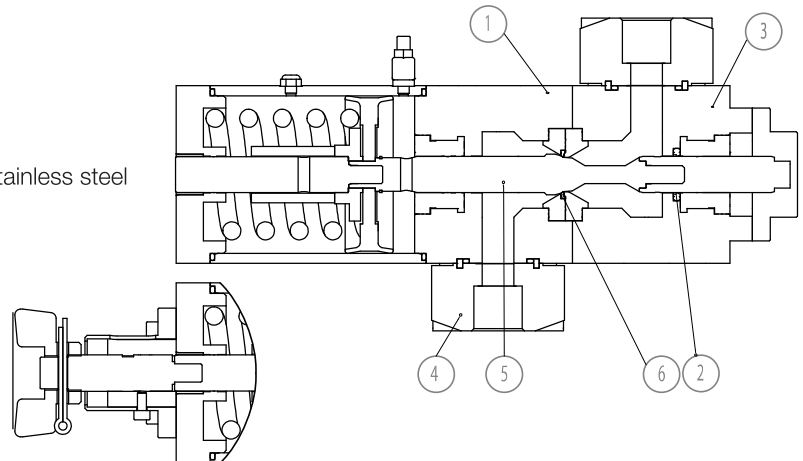


Options with this valve type

- ◆ Connections
 - Threaded female socket (brass) : G 1/4, G 1/2, NPT 1/4, NPT 1/2
 - Weld-on end (stainless steel, Monel) : socket welding SW 1/2", butt welding BW 1/2", BW 3/4"
- ◆ Different types of limit switches available
- ◆ Pneumatic version with manual override available (type MPG 12 NC-HD)
- ◆ Assembly in compact manifolds (possibility to join up to 9 valves on 1 module)
- ◆ Sensor ports for pressure registration / measuring
- ◆ Other options on request

Material specification, Spare parts, Accessories

Position	Description	Material
1	Upper valve body	Brass
2	Spindle seal	Turcon®
3	Lower valve body	Brass
4	Connection piece	Monel, brass, stainless steel
5	Valve spindle	Monel
6	Valve seat	Peek



Detailed illustration of pneumatic version with manual override (type MPG 12 NC-HD)

Spare parts	Article number	
Seal kit for Standard valves:	20141	
◆ Pilot valve 3/2-way, 24V DC:	10311	
Assembly with 5 m cable:	10312	
Assembly with 10 m cable:	10313	
◆ Limit switch (NC or NO)	2-wire	3-wire
Assembly without cable:	10300	10303
Assembly with 5 m cable:	10298	10301
Assembly with 10 m cable:	10299	10302

Dimensions

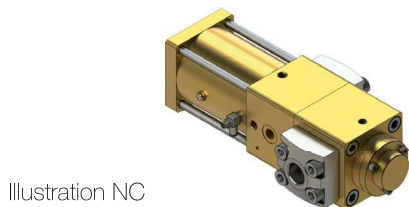
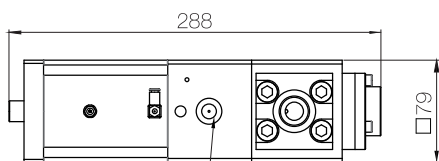


Illustration NC



Valve open Mounting thread

