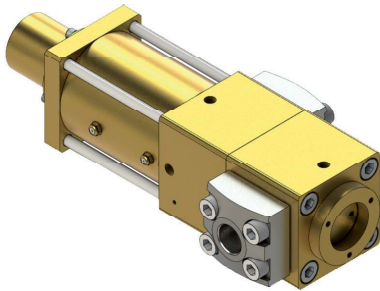


MPG 12 RV

Pressure relief valve



- ♦ Medium : inert gases / rare gases / O₂ / CO₂ / air, other media on request
- ♦ Suitable for high-pressure oxygen service
- ♦ The valve opens from 0 to 100% within a tolerance range of 3% of the set pressure
- ♦ Approval : TÜV / CTE
- ♦ Conformity : CE / ATEX

The valve type MPG 12 RV is a safety valve. If the system pressure exceeds the set pressure, the valve relieves the pressurized area. Therefore, the security of your high-pressure system is guaranteed at any time.

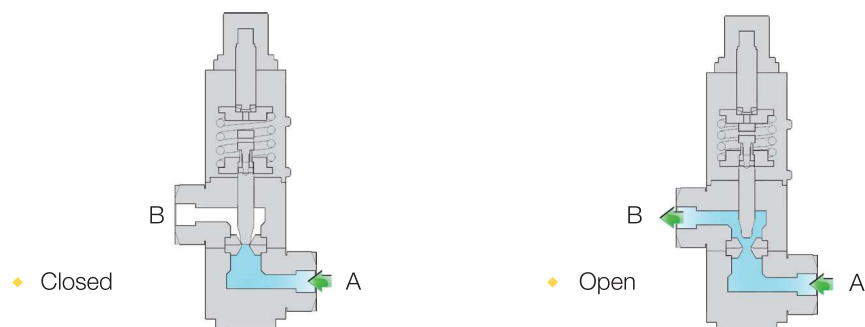
Technical data

Version February 2016

♦ Pressure range	PN 420
♦ Set pressure	80 - 420 bar
♦ Standard Connections	SW 1/2", BW 1/2", BW 3/4"
♦ Nominal diameter of the seat	8 mm
♦ Media temperature	from -40 °C to +80 °C
♦ Ambient temperature	from -40 °C to +60 °C
♦ Leak rate	10 ⁻⁶ mbar l/s
♦ Flow direction	A → B
♦ Kv-value	1,8 m ³ /h
♦ Weight	11 kg (including connection adapter)
♦ Discharge coefficient (according to AD 2000)	Spring area 1 (80-150 bar) w = 0,215 Spring area 2 (130-420 bar) w = 0,3

Function

-  Medium : Gas
-  Flow direction



Options with this valve type

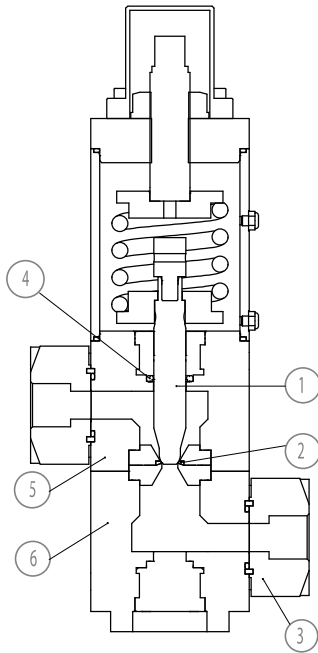
- ◆ Connections

Threaded female socket (brass) : G 1/4, G 1/2, NPT 1/4, NPT 1/2

Weld-on end (stainless steel, Monel) : socket welding SW 1/2", butt welding BW 1/2", BW 3/4"

- ◆ Assembly in compact manifolds (possibility to join up to 9 valves on 1 module)
- ◆ Other connections on request

Material specification



Position	Description	Material
1	Valve spindle	Monel
2	Valve seat	Peek
3	Connection piece	Monel, stainless steel, brass
4	Spindle seal	Turcon®
5	Lower valve body	Brass
6	Upper valve body	Brass

Dimensions

