

## **AiFill Control System**



### **Introduction:**

The **AiFill** Control System has been developed over the past 20 years by our experienced Packaged Gases / Process Engineers who have over 100 years of combined experience within the Packaged Gases / Process industry sectors.

**AiFill** has been adopted by all tier 1 gas producers and is successfully installed in over 50 plants throughout the World, including; Australia, Asia, Middle East, Africa and Europe.

**AiFill** is an integral element of all of our automatic, fully integrated cylinder filling modules



### **Key features**

- Modular building block construction (sequence builder) – pre-coded
- Cost effective for CAPEX & OPEX
- Significant reduction in commissioning time
- Multi language
- Remote (secure) global support
- Highly flexible to cater all needs
- Based upon Siemens S7-1500 & 1200 PLC's
- Programmed using Siemens TIA software
- Siemens; reliable, safe and available worldwide

### **Summary of Key attributes:**

- Plant view – Entire plant on one screen or individual modules
- Recipe driven – Generated / modified in seconds without the need for software engineers
- Sequence builder - Generated / modified in seconds without the need for software engineers
- Filling technique flexibility; Pressure temperature, Mass Flow, Gravimetric
- Supply module(s) flexibility
- Filling Module(s) flexibility
- Analysis system interface
- Reports and Records – Interface with client operating system
- Access control – operation, function, management.
- Interaction / interface with Cold Fill bypass module
- Interaction / interface with our integrated or standalone vacuum systems

**For further details please contact Ian Davies at [idavies@igph.net](mailto:idavies@igph.net) or [www.igph.net](http://www.igph.net)**



[www.aeroflex.co.uk](http://www.aeroflex.co.uk)



[www.igas-ts.com](http://www.igas-ts.com)



[www.krytem.com](http://www.krytem.com)



[www.m-tech-gmbh.com](http://www.m-tech-gmbh.com)

## AiFill Control System



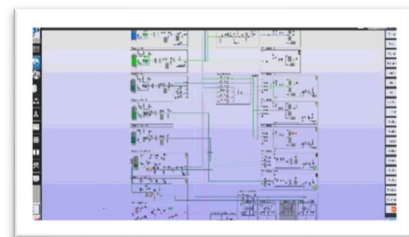
- Shared resources can be queued
- Recipes can be queued
- Each fill step is trended for later examination
- Auto fill certificate generation – client requirements specific
- Maintenance counter; Valve cycles, buffer cylinder pressure cycles, pump run hours
- Add on RFID / Bar code reader system
- Graphical KPI reporting

### Key benefits:

- Standard modular package;
  - Pre-loaded and tested prior to despatch - easy, fast, cost effective commissioning
  - Hardware based on Siemens S7 PLC's – reliable, safe and globally available
  - Integrated Recipe and Sequence builder enables clients to change / amend themselves – no need for a software expert
- Flexible;
  - Easy to change and add new filling recipes & sequences
  - Multi language for International use
  - Interface with client operating system – ERP, SAP, analysis systems etc
- Remote support;
  - Secure, easy and fast

### Modules elements:

- Plant view;
  - Total P&ID view
  - RYG coding
  - Fast and easy fault finding
  - Flexible and pre select zoom feature
  - Trending function



For further details please contact Ian Davies at [idavies@igph.net](mailto:idavies@igph.net) or [www.igph.net](http://www.igph.net)



[www.aeroflex.co.uk](http://www.aeroflex.co.uk)



[www.igas-ts.com](http://www.igas-ts.com)

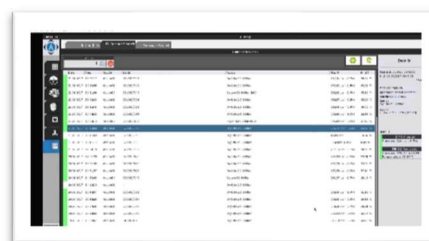
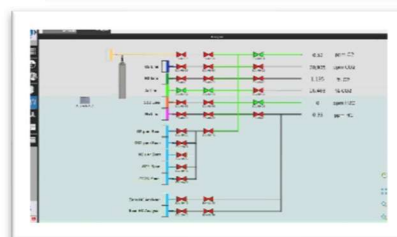
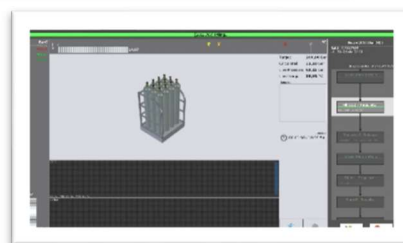
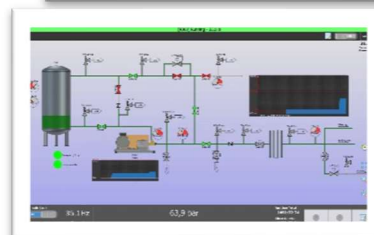
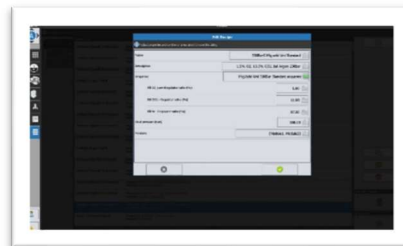


[www.krytem.com](http://www.krytem.com)



[www.m-tech-gmbh.com](http://www.m-tech-gmbh.com)

- Recipes;
  - Unlimited
  - Fast and easy to create / amend (by client)
  - Pre-installed sequences and / or client own
  - Module specific
  - Change tracking facility
- Supply Modules;
  - Fast and easy to add new / additional
  - Pumps, compressors or bundles / cylinders
  - Caters for speed options; VSD, Dual, Mono
  - Line Control (temperature / pressure / flow)
  - Fast and easy fault finding
- Filling Modules;
  - Fast and easy to add new / additional
  - Guides operator through process steps / requirements
  - Provides status of sequence
  - Graphical view
  - Progress bars – pressure / temperature
- Analysis Module;
  - Links to fill record
  - Recipe driven
  - User configuration calibration
  - Batch / line analysis
- Reports & Records;
  - Standard integrated record – Printable / Exportable
  - Search / Filter facility
  - Fault finding identification
  - Batch reports
  - Analysis reports
  - Maintenance reports and records



For further details please contact Ian Davies at [idavies@igph.net](mailto:idavies@igph.net) or [www.igph.net](http://www.igph.net)



[www.aeroflex.co.uk](http://www.aeroflex.co.uk)



[www.igas-ts.com](http://www.igas-ts.com)



[www.krytem.com](http://www.krytem.com)

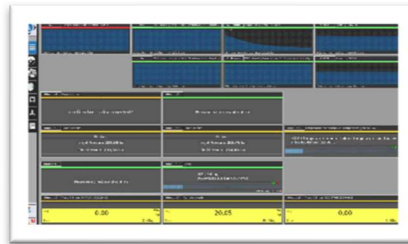


[www.m-tech-gmbh.com](http://www.m-tech-gmbh.com)

- Access control;
  - Multiple logins
  - Page access by login
  - Function access by login – operator, supervisor, Manager
  - Auto language identification

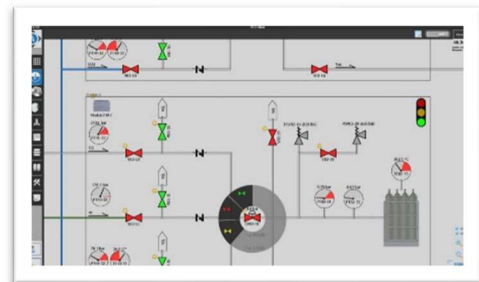


- Remote support;
  - Secure VPN
  - Client security policy
  - Changes log
  - ERP/MES Interface
  - Client CMS



- **Never standing still.....development:**

- Remote factory testing (FAT)
- Remote commissioning / training
- SPC - integration
- Centralised recipe management
- Unmanned filling
- Production planning
- Auto cylinder movement
- Auto cylinder storage



For further details please contact Ian Davies at [idavies@igph.net](mailto:idavies@igph.net) or [www.igph.net](http://www.igph.net)



[www.aeroflex.co.uk](http://www.aeroflex.co.uk)



[www.igas-ts.com](http://www.igas-ts.com)



[www.krytem.com](http://www.krytem.com)



[www.m-tech-gmbh.com](http://www.m-tech-gmbh.com)